

Making the Move from ArcMap to ArcGIS Pro

Christine Homuth
Spatial Information Specialist

November 1, 2022



McMaster University sits on the territories of the Mississauga and Haudenosaunee Nations, and within the lands protected by the Dish With One Spoon wampum agreement.

Code of Conduct

The DASH program and the McMaster University Library are committed to fostering a supportive and inclusive environment for its presenters and participants.

As a participant in this session, you agree to support and help cultivate an experience that is collaborative, respectful, and inclusive, as well as free of harassment, discrimination, and oppression. We reserve the right to remove participants who exhibit harassing, malicious, or persistently disruptive behaviour.

Please refer to our code of conduct webpage for more information:

scds.ca/events/code-of-conduct/

Certificate Program

The Sherman Centre offers a Certificate of Completion that rewards synchronous participation at 7 workshops. We also offer concentrations in Data Analysis and Visualization, Digital Scholarship, and Research Data Management.

Learn more about the Certificate Program: <https://scds.ca/certificate-program>

If you would like to be considered for the certificate, verify your participation in this form: <https://u.mcmaster.ca/verification>

At an unspecified point during the workshop, the code will be entered in the chat window. This is the answer to the third question of the form.

Overview



Overview of ArcGIS products



Differences and similarities



Timeline of support for ArcMap



Licensing and access



Resources



Demo



Questions

Learning Objectives

- Learn more about the ArcGIS programs available to the McMaster community
- Have a better understanding of the status of ArcMap
- Become familiar with the ArcGIS Pro interface and basic functionality
- Know where you can get additional help and resources
(hint: the Library)

Overview of ArcGIS Resources

- ArcGIS Desktop (ArcMap and ArcGIS Pro)
- ArcGIS Online
- Field Apps
 - Field Maps
 - Survey 123
- Apps
 - App Studio
 - Dashboards
 - Drone2Map
 - Experience Builder
 - Hub
 - StoryMaps
 - Web App Builder
 - Business Analyst and Community Analyst Web Apps

ArcGIS Apps

- Essential Apps
 - App Studio
 - Dashboards
 - Experience Builder
 - Hub
 - StoryMaps
 - Web App Builder
 - Business Analyst and Community Analyst Web Apps
- Field Apps
 - Field Maps
 - Survey 123



Explore Open Data by Category



All data



Business & Economy



City Services



Census & Demographics



Culture & Tourism



Environment



Health & Safety



Infrastructure



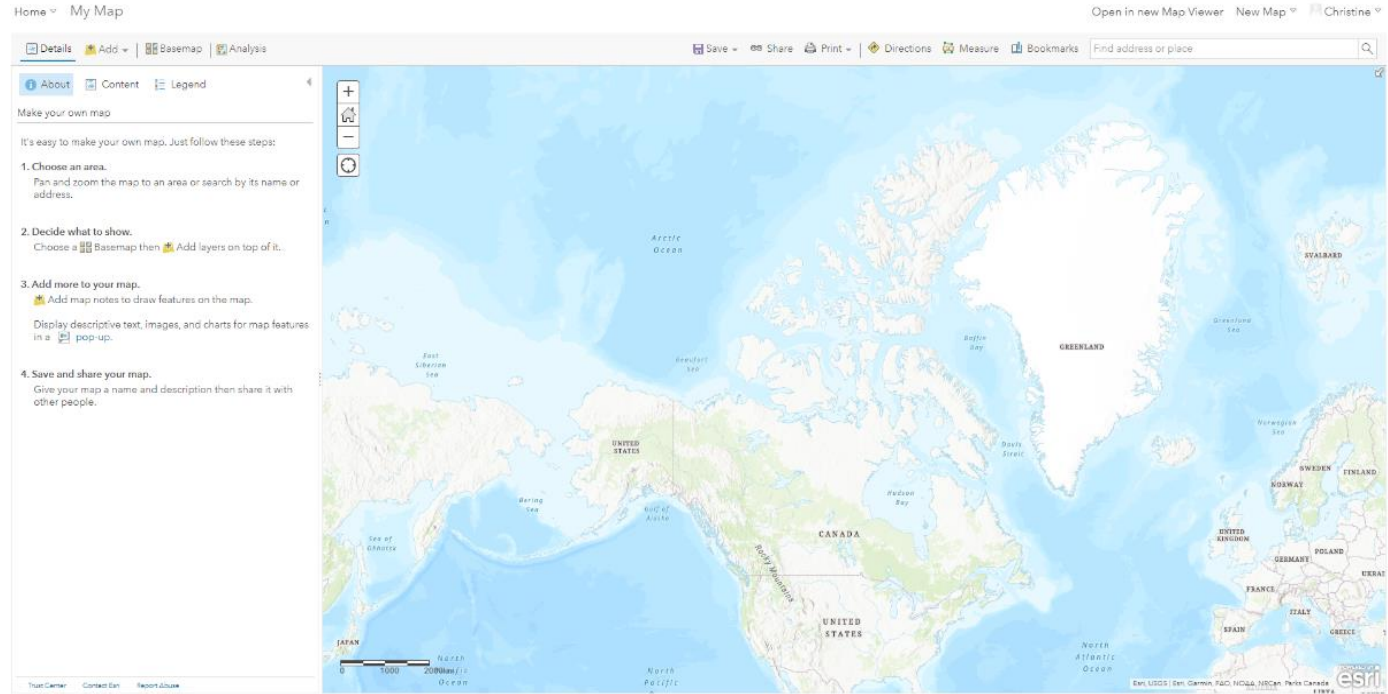
Parking & Transportation



Parks & Recreation

ArcGIS Desktop

- ArcMap 10.8.1
- ArcGIS Pro 3.0 (October 2022)



Differences and Similarities

<https://pro.arcgis.com/en/pro-app/latest/get-started/faq.htm>

	ArcMap	ArcGIS Pro
Version	10.8.2 (not backwards compatible)	3.0.x (not backwards compatible)
Project	.mxd	.aprx
License / account	Single or concurrent use license	Named user account Single or concurrent use license
Application	32-bit	64-bit (https://pro.arcgis.com/en/pro-app/latest/get-started/arcgis-pro-system-requirements.htm)
Appearance	Toolbars	Ribbon (e.g. MS Office)
Editing	Start / stop	Always on
2D / 3D	2D (3D available through ArcScene)	2D and 3D
Layout	Single view or layout	Multiple maps, scenes, charts, tables, and layouts

Timeline of Support

ArcMap 10.8.2

<https://support.esri.com/en/arcmap-esri-plan>

		General Availability Dec 2021 - Feb 2022	Extended Support Mar 2022 - Feb 2024	Mature Support Mar 2024 - Feb 2026	Retired March 01, 2026
Technical Support	Request Case	✓	✓	✓	
	Phone and Chat	✓	✓	✓	
	Online support resources	✓	✓	✓	✓
Software Support	Software updates and patches	✓	✓		
	Software hotfixes	✓	✓		
	New environment certification	✓			

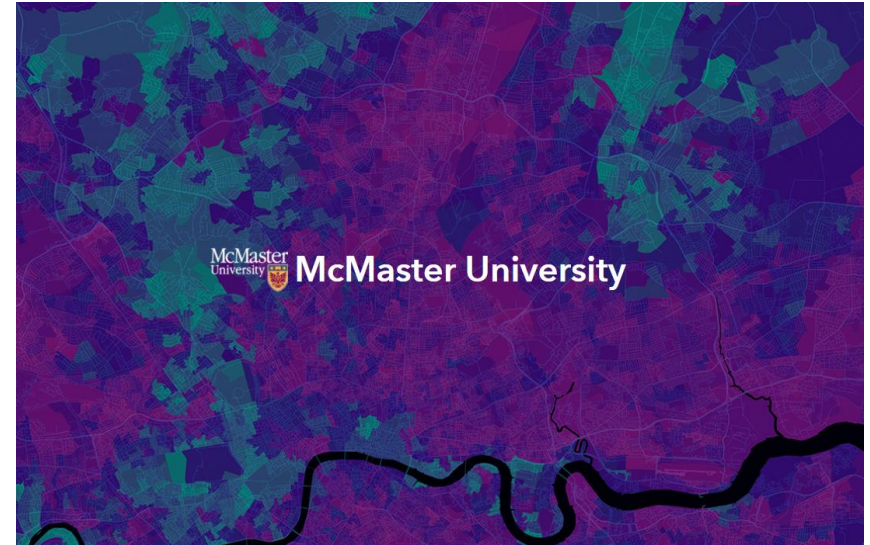
Licensing and Access

Site License

<https://library.mcmaster.ca/services/gis>

Available free of charge to *current* students, staff, and faculty at McMaster University for education and research purposes.

[Request form](#)



Account Types

Organizational account - full functionality, available while affiliated with McMaster

Public account - limited functionality, permanent

<https://www.esri.com/en-us/arcgis/products/create-account>

Account type	Description	More information
ArcGIS organizational account	<p>An ArcGIS organizational account allows you to see the organization's customized view of the website, and gives you access to the organization's authoritative data and other geospatial content that you can use to create maps, scenes, apps, and other geospatial content. You can also share and collaborate with other members of your organization, participate in groups, and save your work.</p> <p>With an organizational account, you have access to your organization, ArcGIS apps, and ArcGIS Developer.</p>	<p>Depending on how you were invited or added to the organization and your organization's security settings, you can sign in to an ArcGIS organizational account using an ArcGIS login, a SAML login, an OpenID Connect login, or a social login (such as Facebook and Google). Your administrator can also enable Esri access on your account, which gives you access to Esri web resources.</p>
ArcGIS public account	<p>An ArcGIS public account is a free account designed for personal, noncommercial use. With a public account, you can create, store, and manage geospatial content, share content, and access content shared by Esri and GIS users around the world.</p> <p>With a public account, you have access to the ArcGIS Online website (with limits on use), My Esri, Esri Community, and other Esri web resources.</p>	<p>You can create and sign in to an ArcGIS public account using an ArcGIS login or a social login (such as Facebook and Google). You can also use your public account to create an organizational account if you're invited to join an organization. The public account becomes an organizational account and all your content moves to the organization.</p>



Resources

ArcMap / ArcGIS Pro

[ArcGIS Pro – Get Started – For ArcMap Users](#)

[Migrate from ArcMap to ArcGIS Pro](#)

[ArcGIS Pro documentation](#)

[Get Started with ArcGIS Pro](#)

[FAQ](#)

Online Resources

- [SCDS Online Learning Catalogue](#)
- [Data Analysis Support Hub \(DASH\)](#)
- [Esri Canada Education and Research Resources](#)
- [Learn ArcGIS](#)
- libgis@mcmaster.ca

Questions about GIS and Geospatial Data?

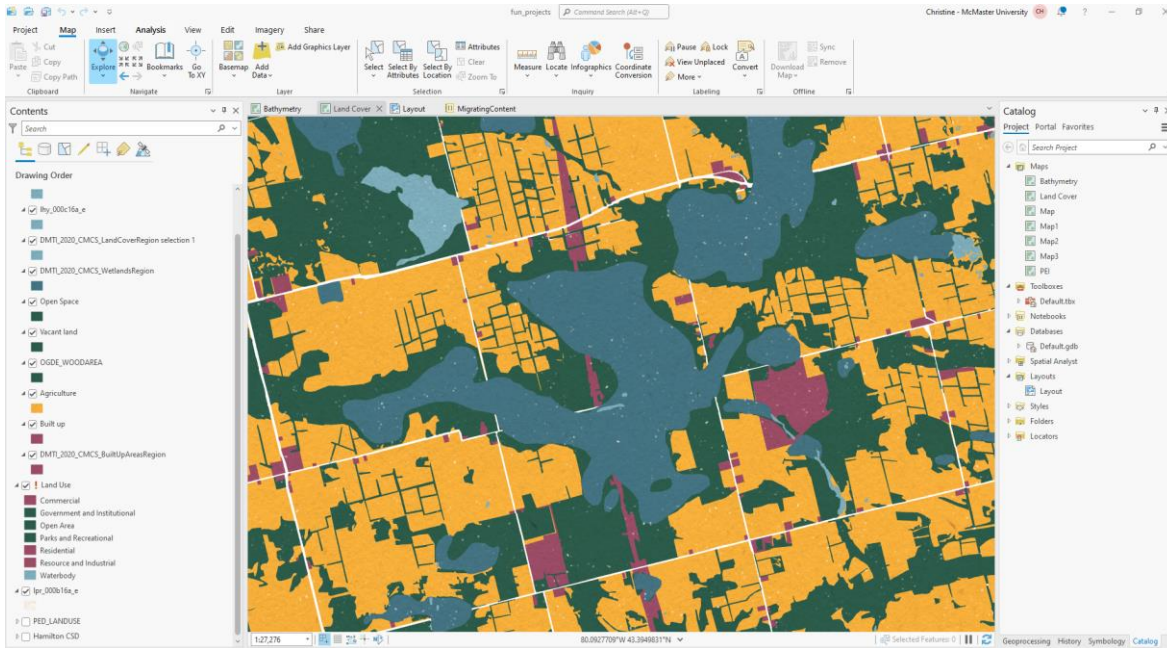
EMAIL US →

Upcoming Events

- [Introduction to Geospatial Data](#)
 - February 14th 10:30 –11:30am
- [Intro to Spatial Analysis with ArcGIS Pro](#)
 - March 13th 5:00 – 7:00pm
- [How to Copy ArcGIS Online Content Between Accounts](#)
 - March 29, 2023
- [Library Events Calendar](#)

Demo

- Interface and navigation
- Create and import projects
- Add and manage data
- Symbology
- Geoprocessing (tool suggestions, credit warnings, selected items)
- Layout
- Share / print





Questions?
libgis@mcmaster.ca

Thank you!